

## The Details.

### THE SHELDON BALLROOM

Includes 25 tables, with 8 to 10 chairs per 66" round table.

Sunday through Thursday . . . . . \$1,000

Friday and Saturday . . . . . \$1,400

### LOUIS SPIERING ROOM

Includes 50 tables, with 8 to 10 chairs per 66" round table.

Monday through Sunday

0-250 guests . . . . . \$1,700

250-350 guests . . . . . \$2,000

350-500 guests . . . . . \$3,000

#### RENTAL FEE FOR BOTH OF THE ABOVE INCLUDES:

- Use of The Sheldon space for four (4) hours
- Facility Manager for four (4) hours
- Security for four (4) hours
- Parking (5 spaces) located behind Concert Hall
- Guest Coatroom

#### ADDITIONAL SERVICES

- Advanced Technical Services  
4-hour minimum, per call . . . . . \$45/hour
- Coatroom Attendant(s)  
*Per attendant, per evening, tipping allowed. . . . \$50*  
*Per attendant, per evening, no tipping . . . . . \$75*
- After-Hours Rehearsal/Set-Up . . . . . \$50/hour  
4-hour minimum, per call

15% discount available for Non-Profit Organizations.  
*Must provide a letter of tax exemption to The Sheldon.*

## The Details.

### SHELDON CONCERT HALL

#### RENTAL FEE

Sunday through Thursday . . . . . \$1,800

Friday and Saturday . . . . . \$2,200

#### RENTAL INCLUDES

- Use of the Sheldon Concert Hall for four (4) hours
- Greenroom for artist hospitality and post-concert receptions
- Security for four (4) hours
- Facility Manager for four (4) hours
- House Manager & Ushers, by advance request, based upon availability
- Ten (10) VIP Parking spaces behind Concert Hall

#### ADDITIONAL SERVICES

- Advanced Technical Services  
Minimum 4-hour charge, per call . . . . . \$45/hour
- Box Office Personnel . . . . . \$100 per person/evening
- Merchandise Salesperson . . . . . \$25 per person/evening  
*All merchandise sales subject to 20% commission.*
- Coatroom Attendant(s)  
*Per attendant, per evening, tipping allowed. . . . . \$50*  
*Per attendant, per evening, no tipping . . . . . \$75*
- After-Hours Rehearsal/Set-Up  
Minimum 2-hour charge, per call . . . . . \$50/hour

15% discount available for Non-Profit Organizations.  
*Must provide a letter of tax exemption to The Sheldon.*

### KEMPER ATRIUM AND SHELDON ART GALLERIES

#### RENTAL FEE

Any day . . . . . \$300/hour, 2-hour minimum

#### RENTAL INCLUDES:

- Security in Emerson Center building
- Facility Manager, Gallery Ushers & Guest Coatroom

No discount available for Non-Profit Organizations.

## The Sheldon Wedding.

*Make your wedding day  
memorable and convenient  
for you and your guests by  
hosting both the wedding  
ceremony and reception in  
the gracious elegance of  
The Sheldon.*

The Sheldon Wedding gives discounted rates for access to all areas of The Sheldon on your special day: The Greenroom for groomsmen and groom, Dressing Rooms for bridesmaids and bride, the Concert Hall for your wedding ceremony, the Atrium Lobby for a cocktail reception, and finally The Sheldon Ballroom for dinner and dancing.

RENTAL FEE  
\$ 2500.00

RENTAL INCLUDES:

- Greenroom and Dressing Rooms prior to ceremony
- Rehearsal during normal business hours
- Concert Hall for two (2) hours
- Atrium Lobby for one (1) hour
- Ballroom for four (4) hours
- Security in main lobbies
- VIP parking behind Sheldon (10 cars)

ADDITIONAL SERVICES OFFERED:

- Advanced Technical Services  
Minimum 4-hour charge, per call . . . . . \$45/hour
- Coatroom Attendant(s)  
*Per attendant, per evening, tipping allowed. . . . . \$50*  
*Per attendant, per evening, no tipping . . . . . \$75*
- After-Hours Rehearsal/Set-Up  
Minimum 2-hour charge, per call . . . . . \$50/hour

## Sheldon Preferred Caterers.

### CATERING SERVICE AT THE SHELDON

For convenience and flexibility, The Sheldon allows any licensed Missouri catering firm to provide food and service for events. All caterers must show proof of liability insurance, workman's compensation for servers, and state business license. The Sheldon has a preferred list of caterers. If you choose a caterer not on the preferred list we will ask their representative to meet with us and provide copies of the above documentation.

A \$3.00 per person catering fee is added to all contracts which do not utilize a caterer from The Sheldon preferred catering list.

**Call any of the seven preferred caterers listed, and they will be happy to help plan your event.**

BRYAN YOUNG CATERING PLUS  
7118 Oakland Ave  
St. Louis, MO 63117  
314.781.0243

CATERING YOUR WAY BY LISA  
6432 Gravois  
St. Louis, MO 63116  
314.481.5500

GOURMET FOODWORKS  
Milan Manjencich  
6717 Vernon Ave  
St. Louis, MO 63130  
314.721.3233

RUSO'S GOURMET CATERING  
9904 Page Avenue  
St. Louis, MO 63132  
314.427.6771

HENDRI'S CATERING  
4501 Ridgewood Avenue  
St. Louis, MO 63116  
314.752.4084

ORLANDO'S  
Sam Orlando  
4300 Hoffmeister  
St. Louis, MO 63125  
314.638.6660

LACHEF CATERING  
7169 Manchester Road  
St. Louis, MO 63143  
314.647.5350

## Sheldon Beverage Service.

*The Sheldon offers you and your guests the finest in specialty, imported, and premium beverages for every event.*

Whether you choose a Premium Bar, House, Domestic Bar Package or our Cash Bar Service, your guests will experience exemplary service and refreshing drinks. *An 18% Service is added to all Beverage Service Fees. If no tip jar, automatic \$100 tip per bartender will be added to contract.*

- Non-Alcoholic Open Bar: Minors only, unless otherwise agreed on by client and The Sheldon
- The Sheldon uses plastic barware for beverage service. Clients may request glass barware at additional cost.

### CASH BAR

Deposit of \$125 per bar/One bartender per every 100 people.  
Deposit refundable if each bar makes \$300

### TALLY BAR

Sheldon cash bar price of \$5.00 per drink, billed to client, plus bartender fees, plus 18% and tip (\$100/bartender)

### EXTRA BARTENDERS

- Bartender: \$125.00
- Bar Back: \$ 75.00

---

*No liquor can be donated for your event and liquor cannot be brought in from an outside source, due to The Sheldon having the liquor license. NO EXCEPTIONS.*

---

### PREMIUM OPEN FULL BAR

\$20.00 pp / 4-hours plus 18% Beverage Service Fee and tip (\$100/bartender)

All liquors (premium): Jack Daniels Black, Maker's Mark, Crown Royal, Bacardi Light Superior, Captain Morgan Spiced, Chivas Regal, Glenlivet 12-year, Bombay Sapphire, Gray Goose, Disaronno Amaretto, Triple Sec

Microbrew and Domestic Beers

Premium Wine Assortment

Dasani water, cranberry juice, orange juice

By request – finalized by contract prior to your event: Jose Cuervo Gold Tequila, Martell Cognac, Teas – flavored/iced

### HOUSE OPEN BAR

\$17.00 pp / 4- hours plus 18% Beverage Service Fee and tip (\$100/bartender)

Jack Daniels Black Label, Bacardi Light Superior, Dewar's White Label, Beefeater Absolut, Disaronno Amaretto

Microbrew and Domestic Beers

Premium Wine Assortment

Assortment of sodas, cranberry, and orange juice

### BEER, WINE, SODA

\$13.00 pp / 4-hours plus 18% Beverage Service Fee and tip (\$100/bartender)

Microbrew and Domestic Beers

Premium Wine Assortment

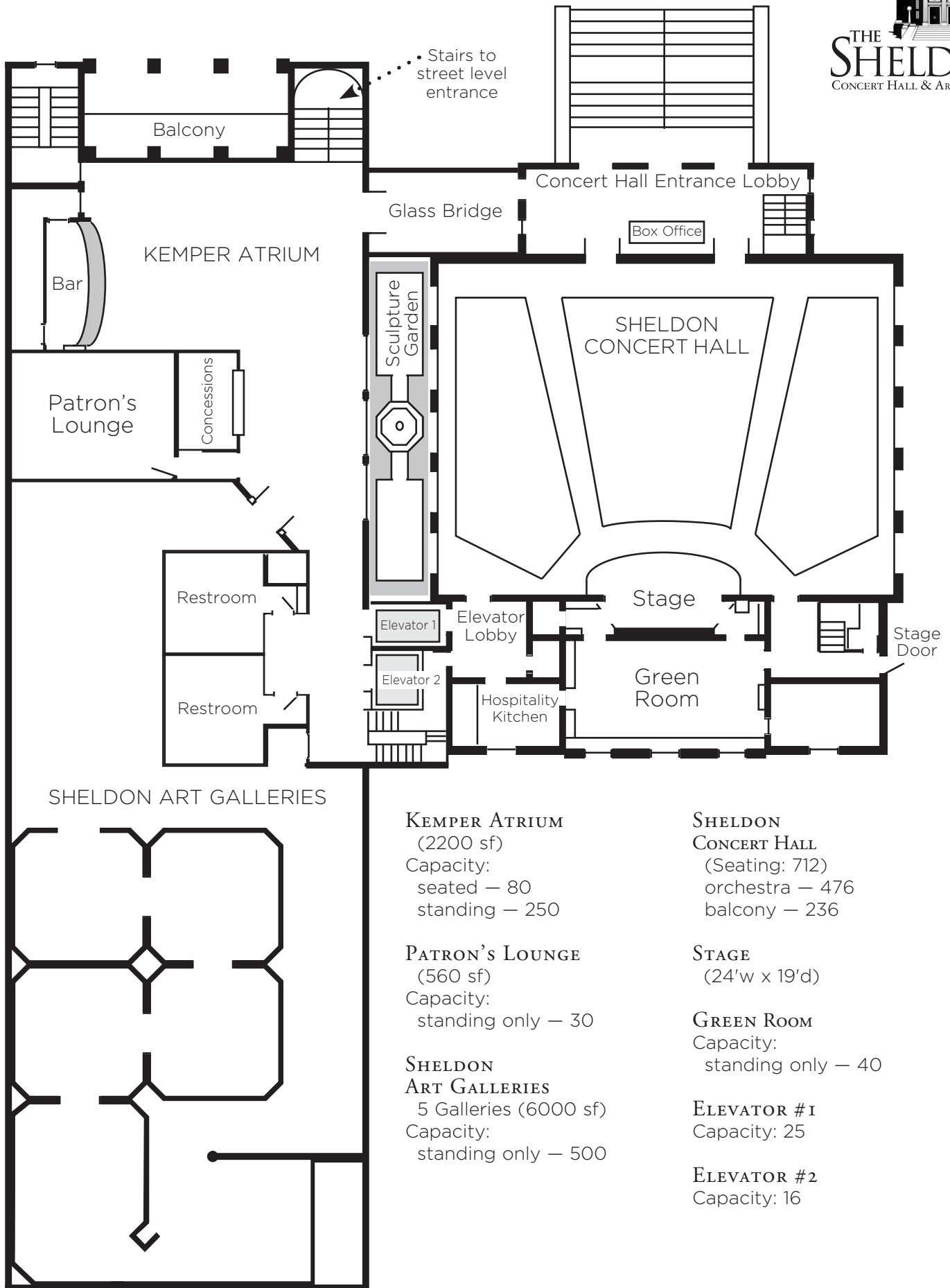
Assortment of sodas, cranberry, and orange juice

### NON-ALCOHOLIC OPEN BAR (MINORS ONLY)

\$6.00 pp / 4-hours plus 18% Beverage Service Fee and tip (\$100/bartender)

Assortment of sodas, cranberry, and orange juice

# FULL FACILITY *Level 2*



**KEMPER ATRIUM**  
(2200 sf)

Capacity:  
seated — 80  
standing — 250

**PATRON'S LOUNGE**  
(560 sf)

Capacity:  
standing only — 30

**SHELDON ART GALLERIES**  
5 Galleries (6000 sf)

Capacity:  
standing only — 500

**SHELDON CONCERT HALL**

(Seating: 712)  
orchestra — 476  
balcony — 236

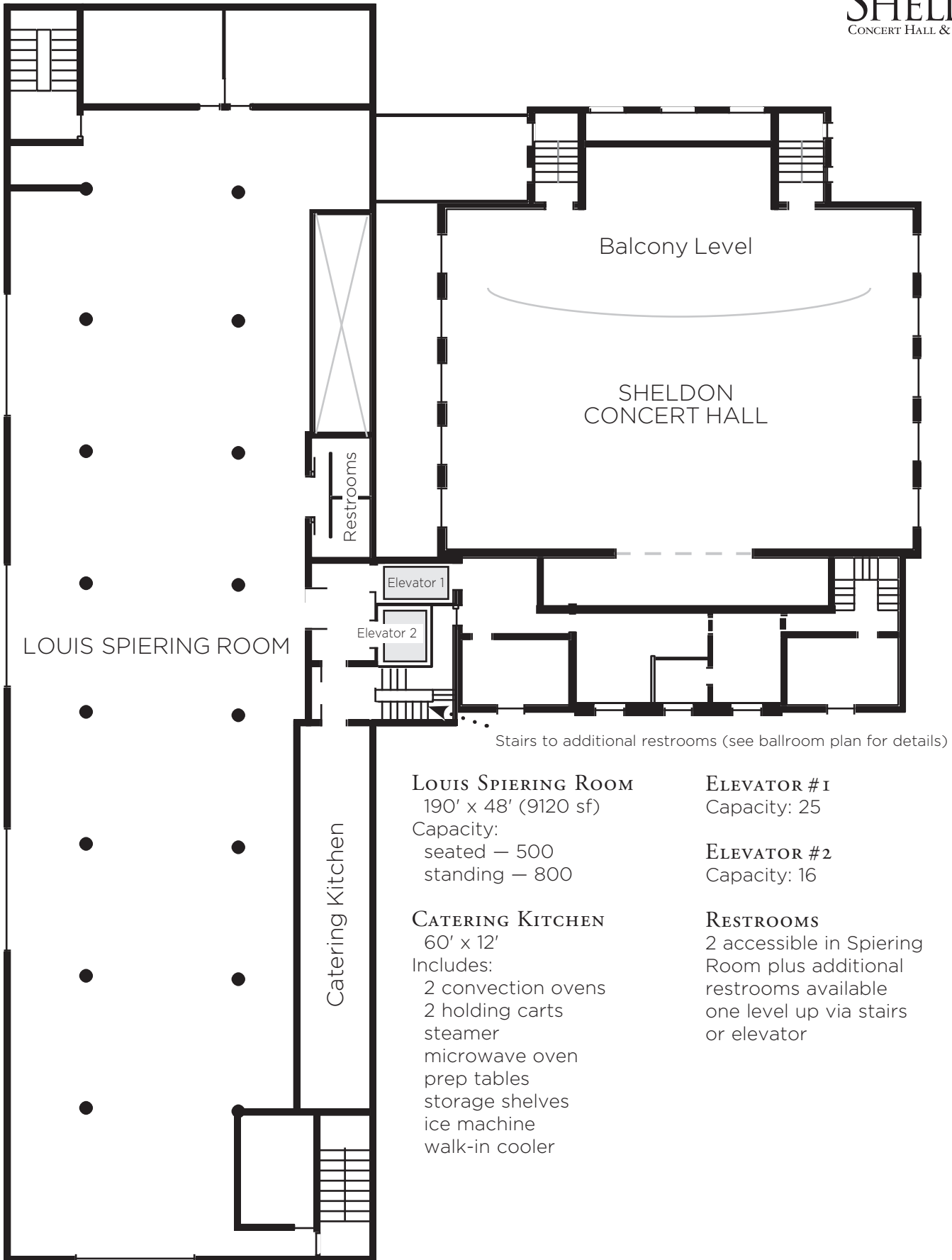
**STAGE**  
(24'w x 19'd)

**GREEN ROOM**  
Capacity:  
standing only — 40

**ELEVATOR #1**  
Capacity: 25

**ELEVATOR #2**  
Capacity: 16

# LOUIS SPIERING ROOM *Level 3*



**LOUIS SPIERING ROOM**  
190' x 48' (9120 sf)

Capacity:  
seated — 500  
standing — 800

**CATERING KITCHEN**

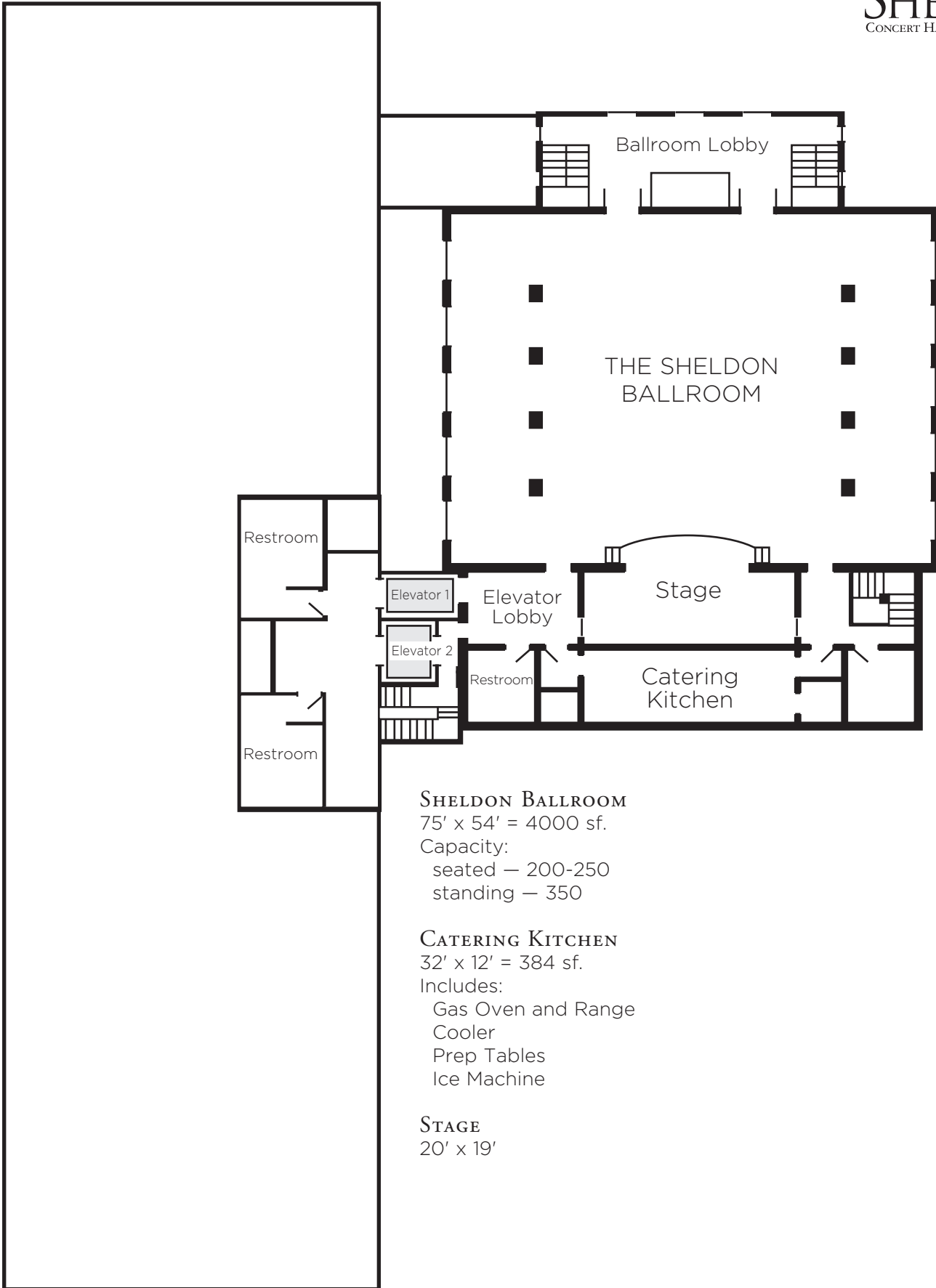
60' x 12'  
Includes:  
2 convection ovens  
2 holding carts  
steamer  
microwave oven  
prep tables  
storage shelves  
ice machine  
walk-in cooler

**ELEVATOR #1**  
Capacity: 25

**ELEVATOR #2**  
Capacity: 16

**RESTROOMS**  
2 accessible in Spiering Room plus additional restrooms available one level up via stairs or elevator

# THE SHELDON BALLROOM *Level 4*



## **SHELDON BALLROOM**

75' x 54' = 4000 sf.

Capacity:

seated – 200-250

standing – 350

## **CATERING KITCHEN**

32' x 12' = 384 sf.

Includes:

Gas Oven and Range

Cooler

Prep Tables

Ice Machine

## **STAGE**

20' x 19'